



WHITSUNDAYS COLLEGE OF ENGLISH

Fact Sheet

LOCATION

The Whitsundays College of English (SACE Great Barrier Reef Whitsundays) is located in Airlie Beach on the Whitsunday Coast of Queensland. The Campus is located in a NEW modern building which is a 5 minute walk from public transport, and a 10 minute walk to the beach and shopping centre.

Airlie Beach, Whitsundays, Queensland

- The Whitsunday area is located in the heart of the Great Barrier Reef and 74 tropical islands.
- Voted as one of the top 3 regional tourism areas by international visitors.
- Tropical location with warm days year round.
- Relaxed and friendly resort style environment.
- The Whitsundays is known as the Sailing Mecca of Australia.



GETTING HERE

The Whitsundays region is serviced by two commercial airports:

- The Whitsunday Coast Airport (Proserpine)
- Great Barrier Reef Airport (Hamilton Island)

Jetstar, Virgin Australia and Tiger Airways have many direct and / or connecting flights from Brisbane, Sydney and Melbourne. Qantas also has direct flights from Cairns to the Great Barrier Reef Airport on Hamilton Island.

CLIMATE

Average daily temperatures range from 23°C in the winter months from June to July and 30.5°C in January during the height of summer. Average water temperatures remain a welcoming 20°C - 25°C all year round.

TRANSPORT

Students are issued with a student card which entitles them to a discount on the Whitsunday Bus Service. An airport bus transfer service is also available from Proserpine to Airlie Beach which costs approximately AUD\$17.

DIRECT ENTRY

Direct Entry to TAFE (Certificate III Commercial Cookery & Diploma of Hospitality Management). The Whitsundays is a regional area for migration purposes.

WORKING IN THE WHITSUNDAYS

Airlie Beach is a busy tourism town which attracts both international and domestic tourists. Students find part-time work in shops, cafes, restaurants, bars, hotels and resorts. Students can also enrol in our English & Work Oz Course which prepares them for entry into the Australian workplace.

COURSES

- | | |
|--|---|
| • General English - 30 / 25 / 20 / 17 hours | • English & Work Oz (Paid Work Placement) |
| • Cambridge Preparation (FCE & CAE) | • English & Work Experience (Internship) |
| • IELTS Preparation (Full-Time) | • Evergreen (50+ Seniors Programme) |
| • Direct Entry - TAFE Hospitality Programmes | • Corporate Training |
| • English + Sailing / Scuba Diving | • Study Tour / Summer School Programmes |
| • English + Sail Learn to Earn | • Private Tuition |

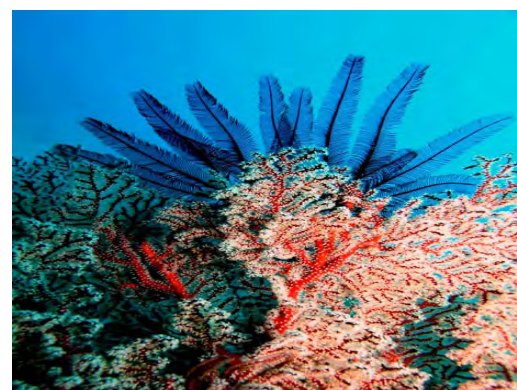
ACCOMMODATION

Homestay: Full board including 3 meals per day. Shared rooms available for two students travelling together. Minimum booking 4 weeks or for the length of the students course.

SACE Student House: Large furnished and self-contained share house for SACE students.

Self-Contained Apartments: Available on request

Hostel: Available on request



NATIONALITY MIX

Swiss 20%	German 5%
French 10%	Italian 5%
South American 10%	Korean 20%
Eastern European 10%	Japanese 5-10%
Other 10-15%	

The Whitsundays College of English is a smaller campus with a diverse nationality mix.

The campus is accredited to take 90 students.

SAMPLE TIMETABLE

WEEK 1	MON	TUE	WED	THU	FRI
08:30 - 10:30	- Intro to Unit - Writing	- Grammar - Listening & Speaking	- Vocabulary - Reading Task	- Speaking & Writing - Vocabulary	- Weekly revision - Writing
11:00 - 12:20	- Reading - Speaking	- Pronunciation - Vocabulary	- Media / Music - Listening	- Authentic Reading	- Weekly Test - Speaking
13:00 - 14:30	Special Studies I	Special Studies II	Special Studies I	Special Studies II	Club SACE Excursion

ACTIVITIES

SACE organises a varied and active social programme for students called Club SACE. Club SACE enables students to meet new people and experience the best the Whitsundays has to offer. Club SACE activities are held on Friday afternoons and weekends.

I decided to study at the Whitsundays College of English because they offer English & Diving Course

EXAMPLES OF CLUB SACE WEEKEND EXCURSIONS:

- Snorkelling on the Great Barrier Reef
- Sailing trip to Blue Pearl Bay
- Exploring the majestic Whitehaven Beach
- Camping on a deserted Tropical Island
- Horse Riding through the Rainforest
- Exploring Airlie Beach on a Scooter
- Viewing Crocodiles in the Wild on an Eco Tour
- Cuddling Koalas at the Hamilton Island Koala Gallery
- Visiting the Cedar Creek Falls

EXAMPLES OF CLUB SACE FRIDAY EXCURSIONS:

- A Treasure Hunt through Airlie Beach
- Bushwalking through the National Parks
- Beach Cricket and BBQ
- International Food Fair at the lagoon
- Visiting the Proserpine Museum
- Trivia Night
- Tennis Lessons
- Yoga
- Karaoke

TESTIMONIALS

I heard that there are a small number of people in each class so I knew I could ask questions easily. I recommend the course to others because the Whitsundays is the most beautiful location in the world. The cost of the Dive Course was very cheap and it includes food, text book, dive equipment and trips to the Great Barrier Reef.

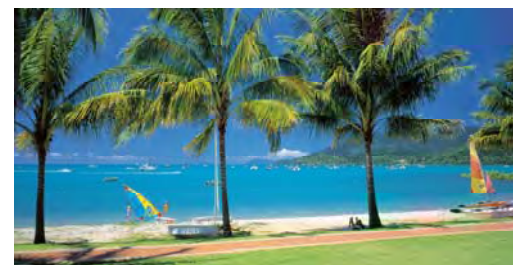
Tomoko Ito - Japan

I chose to come to the Whitsundays College of English because I could book a package to study the Cambridge FCE Exam Preparation Course and also complete the WorkOz Programme. The WorkOz Programme really helped me to enter the Australian Work environment and for people like me who haven't really worked much before, it helped to have the College support me and offer advice.

Audrey Bourdon - France

I was living and studying in Sydney for 2 years and I decided to do something different in life and something more challenging and that's why I chose the Whitsundays. It offers a relaxing life with beautiful views and very friendly people. I really enjoyed my course at the Whitsundays College of English. The staff are very kind and helpful in all situations.

Eliana Canutti—Brazil



WHITSUNDAYS COLLEGE OF ENGLISH